

Element Replacement Kit

When replacing elements on Common Electric and Pro-series electric fryers, it is important to ensure the element wiring is properly secured and routed.

New-style tilt brackets (p/n 106-0572, left and 106-0573, right) are essential to achieve the proper wire routing. The high-temperature wire ties included with the kit are used to secure the element wiring to the bracket. Conventional wire ties can be used lower in the cabinet for routing and securing the element wires. Follow the illustrations below for assessing the tilt brackets and routing the element wiring. Replace the bushing surrounding the probe on the tilt bracket with the bushing provided; plug the unused probe port, if present, with the provided dome plug. Use the provided stainless steel wire ties to secure the probe to the bracket.

In This Kit		
Part No.	Description	Qty
*	Element	1
826-2141	Wire tie kit (4 ties)	1
807-1025	Probe bushing	1
816-0480	Dome plug	1
809-0567	Stainless steel ties	2
8072135	6-pin male plug	1
807-2137	9-pin female plug	1
819-6146	Instructions	1

* Elements vary

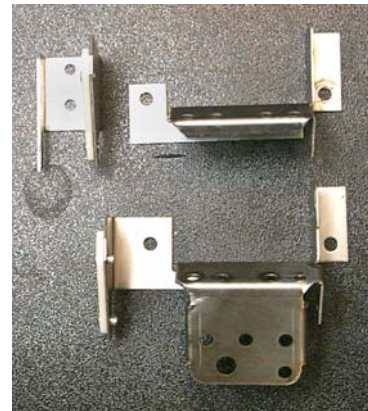
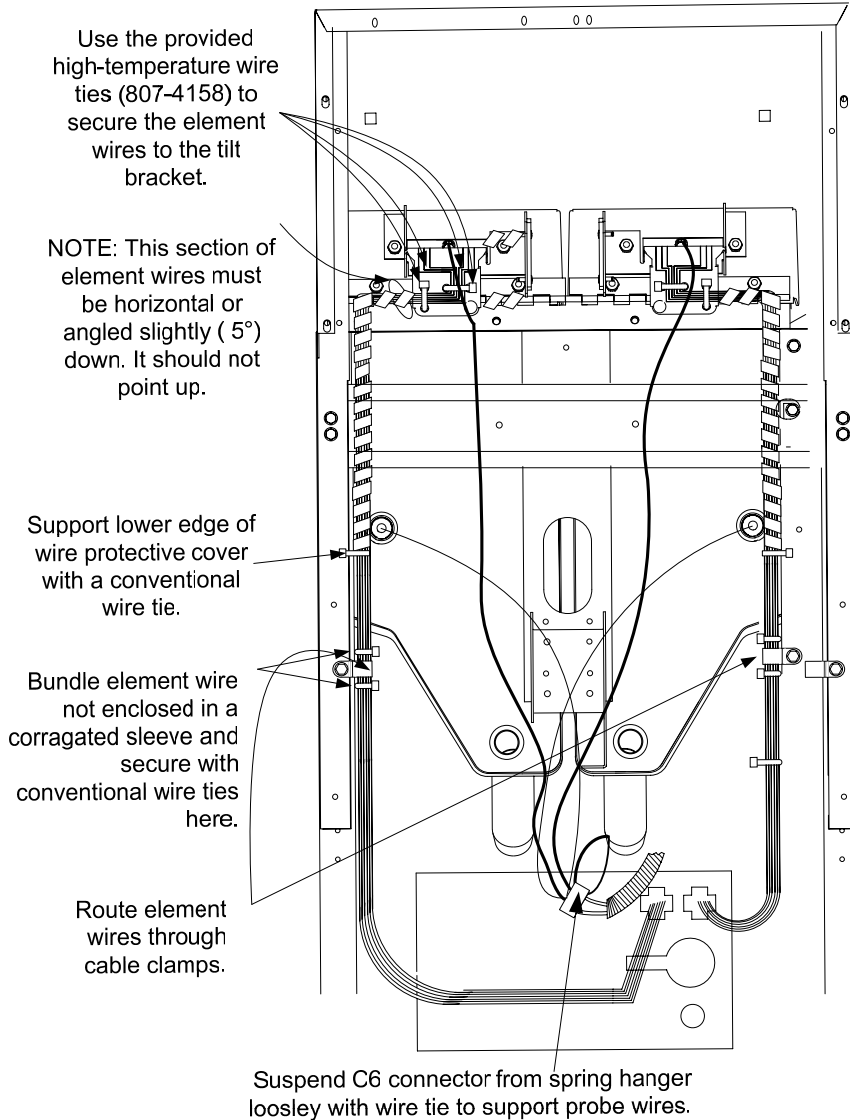


Figure 1: If present, the two-piece bracket at top should be replaced by the one piece bracket (below). An additional brake on the new bracket provides an additional surface to secure the elements wiring.



Figure 2: The high-temp wire ties are shown securing the element wires to the one-piece tilt bracket.